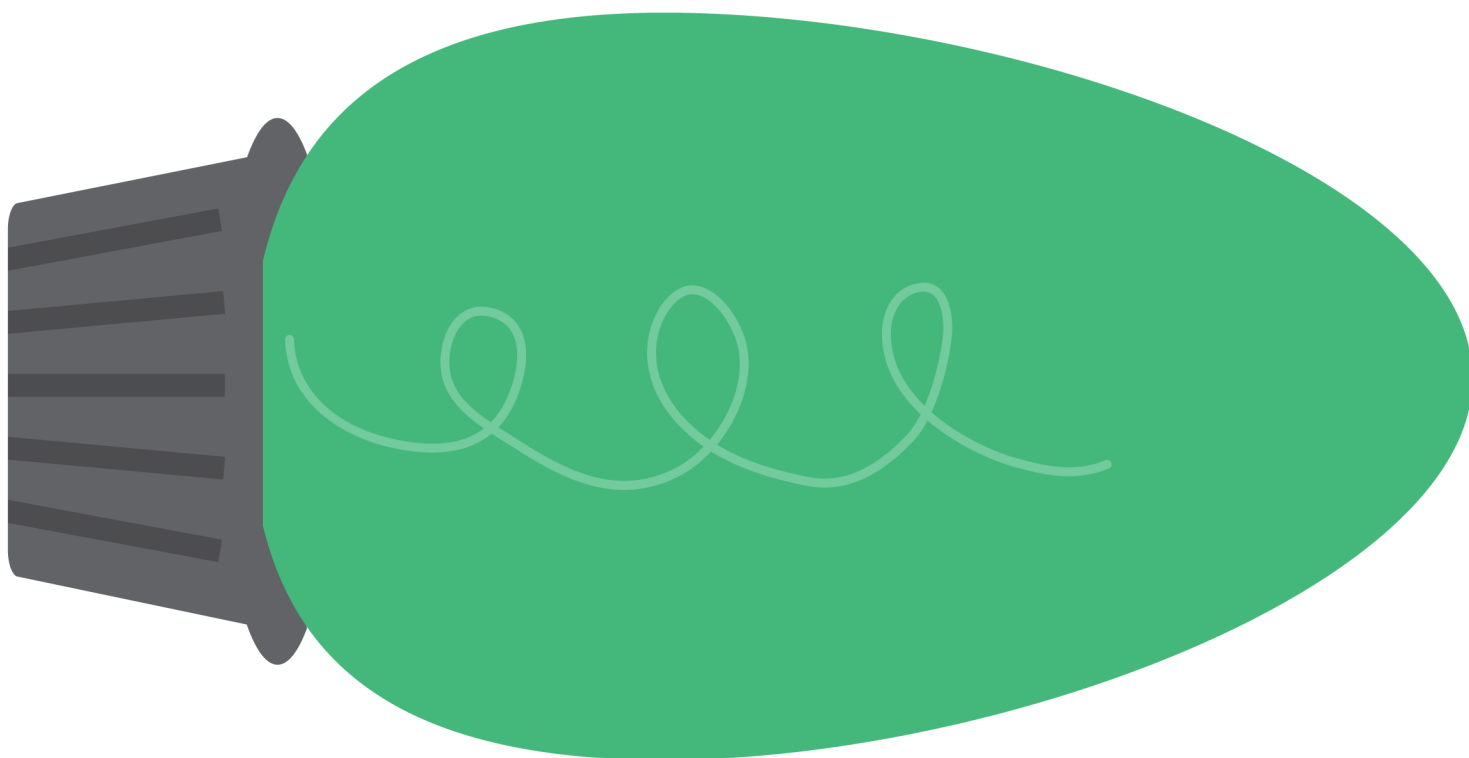
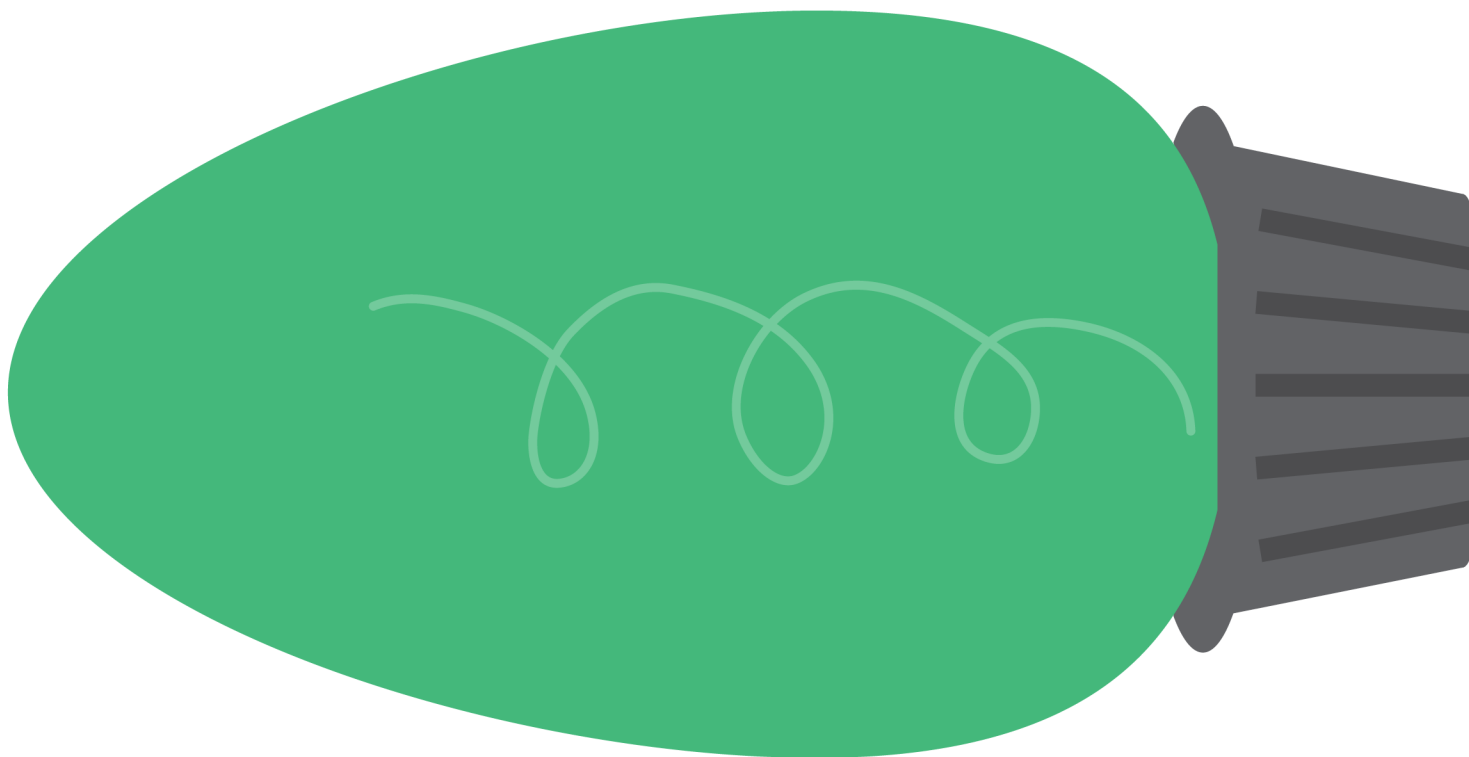




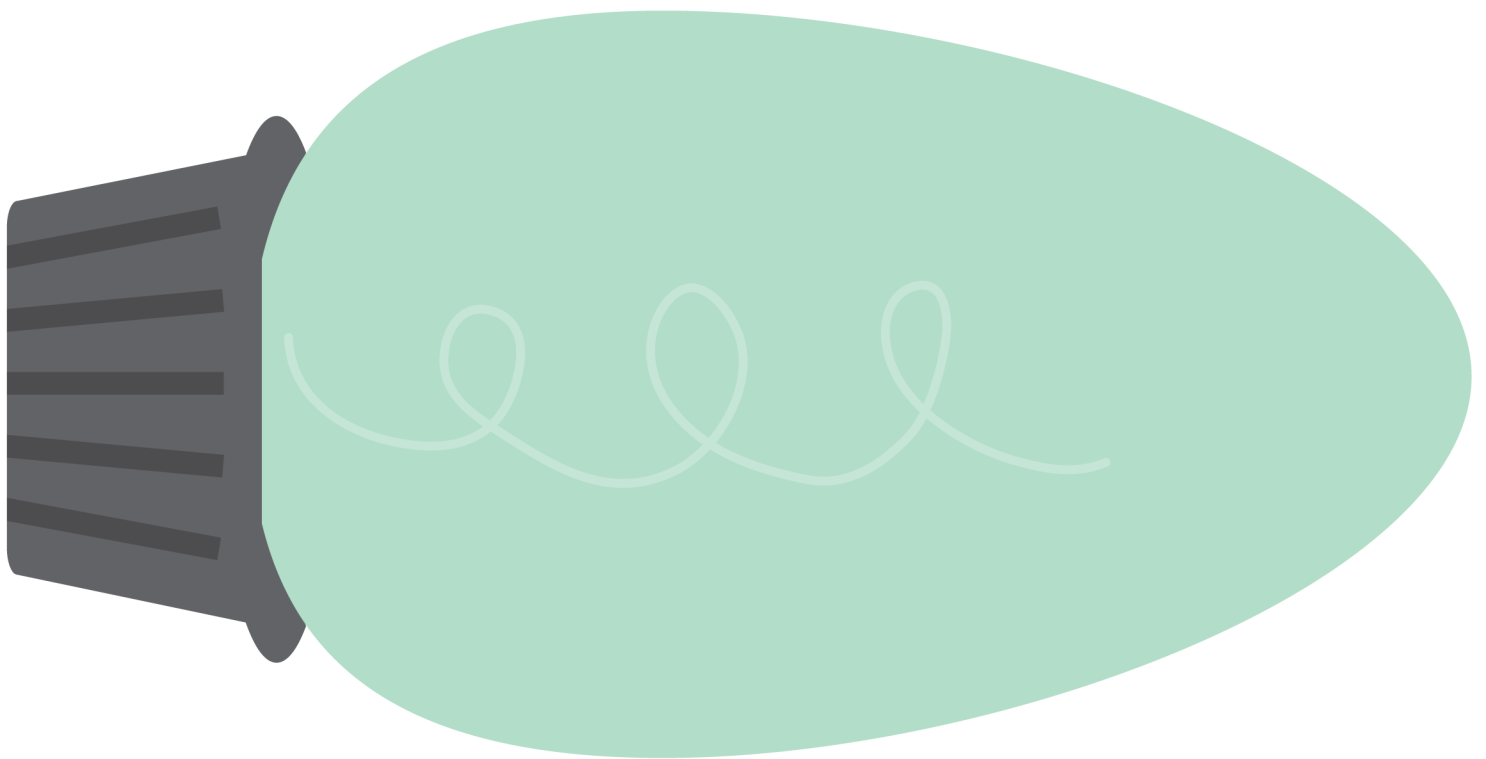
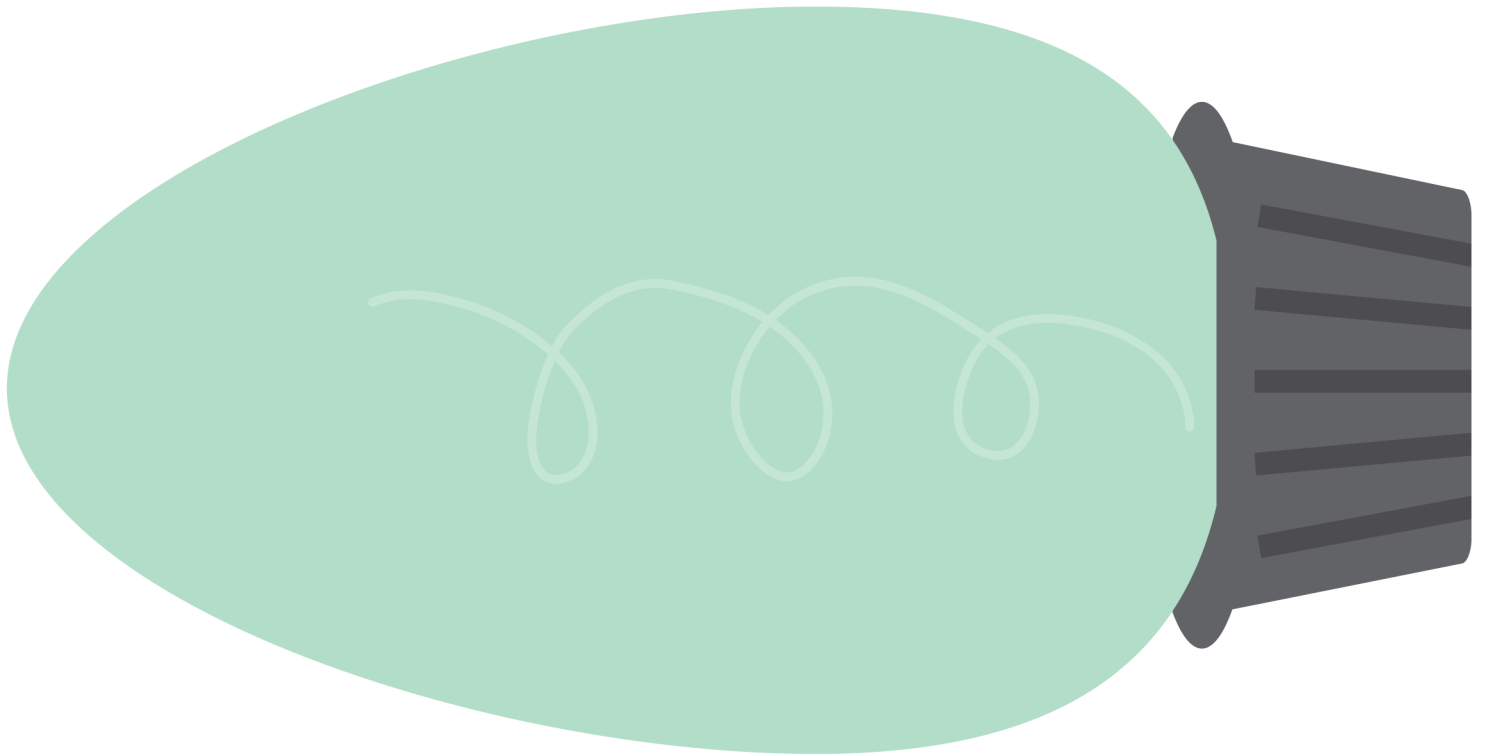
JUMBO CHRISTMAS LIGHT GARLAND

INSTRUCTIONS: Print this template on cardstock and cut out each bulb. Attach bulbs to bulky gray yarn using hot glue to create a garland your desired length.



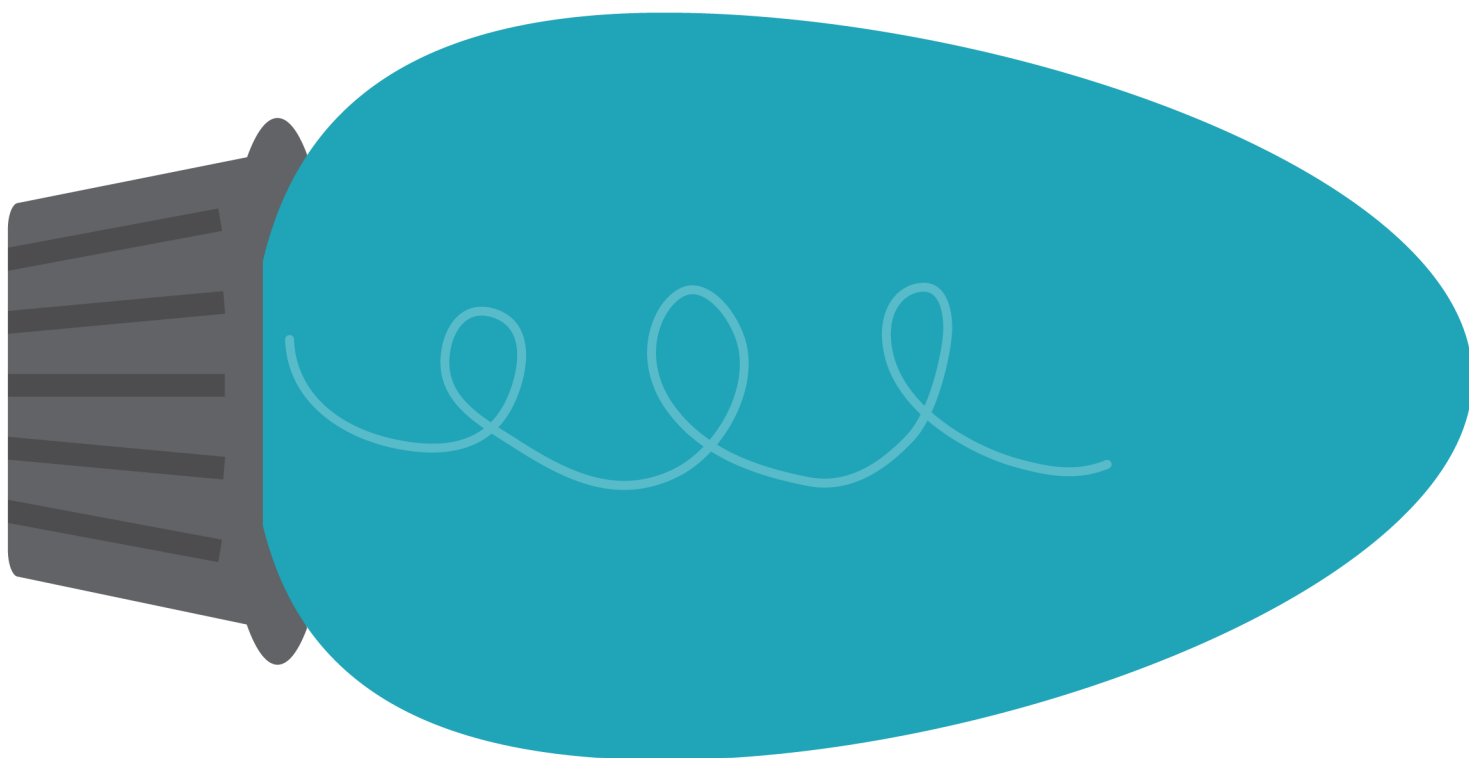
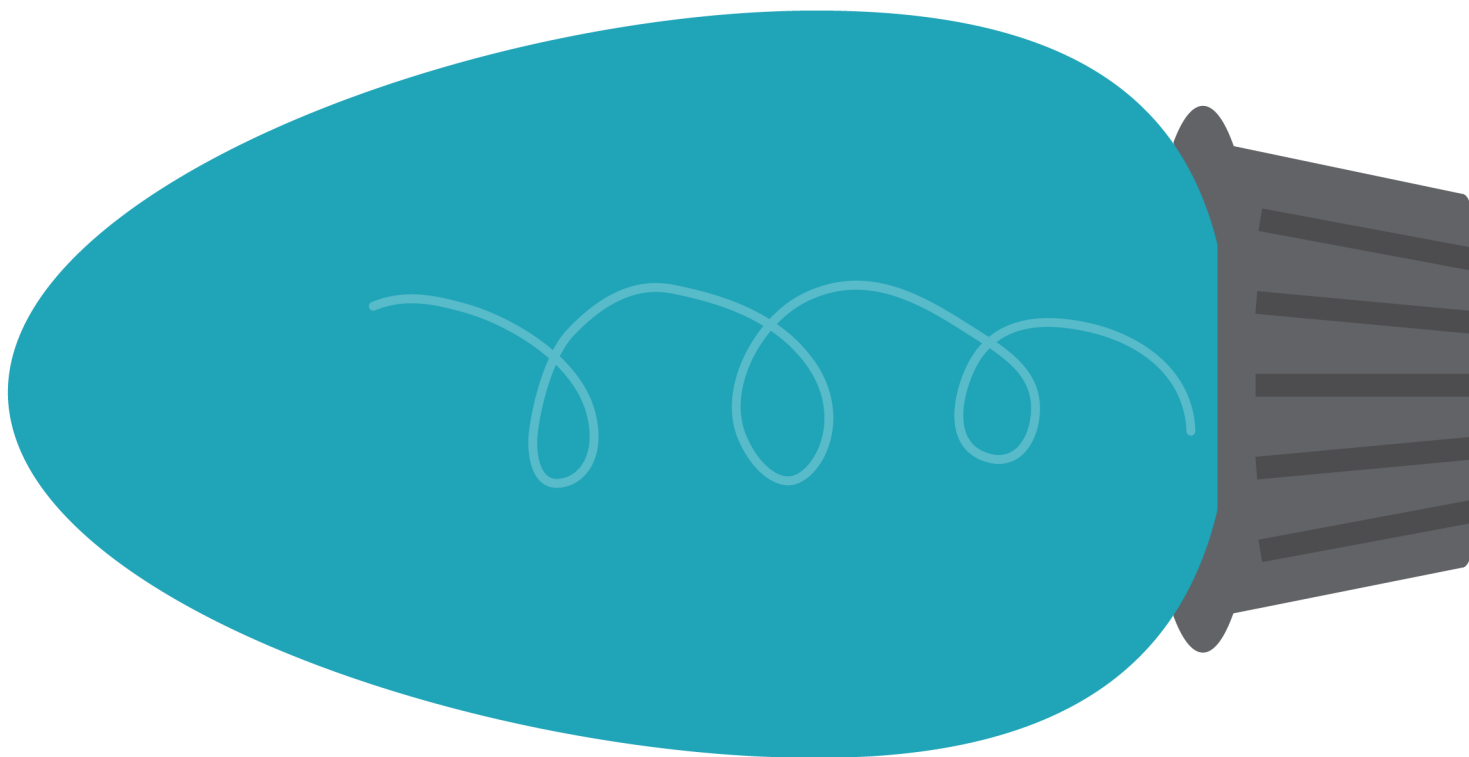
JUMBO CHRISTMAS LIGHT GARLAND

INSTRUCTIONS: Print this template on cardstock and cut out each bulb. Attach bulbs to bulky gray yarn using hot glue to create a garland your desired length.



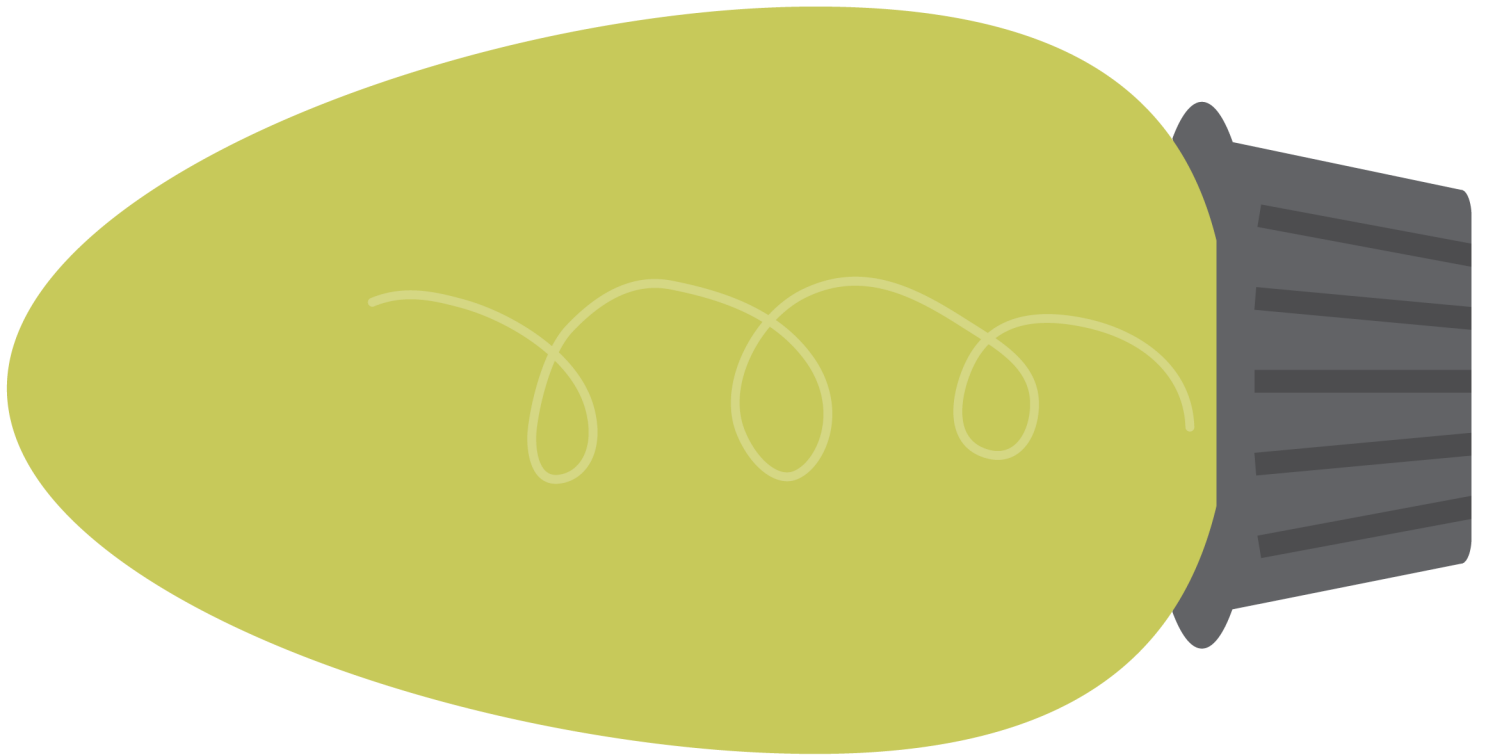
JUMBO CHRISTMAS LIGHT GARLAND

INSTRUCTIONS: Print this template on cardstock and cut out each bulb. Attach bulbs to bulky gray yarn using hot glue to create a garland your desired length.



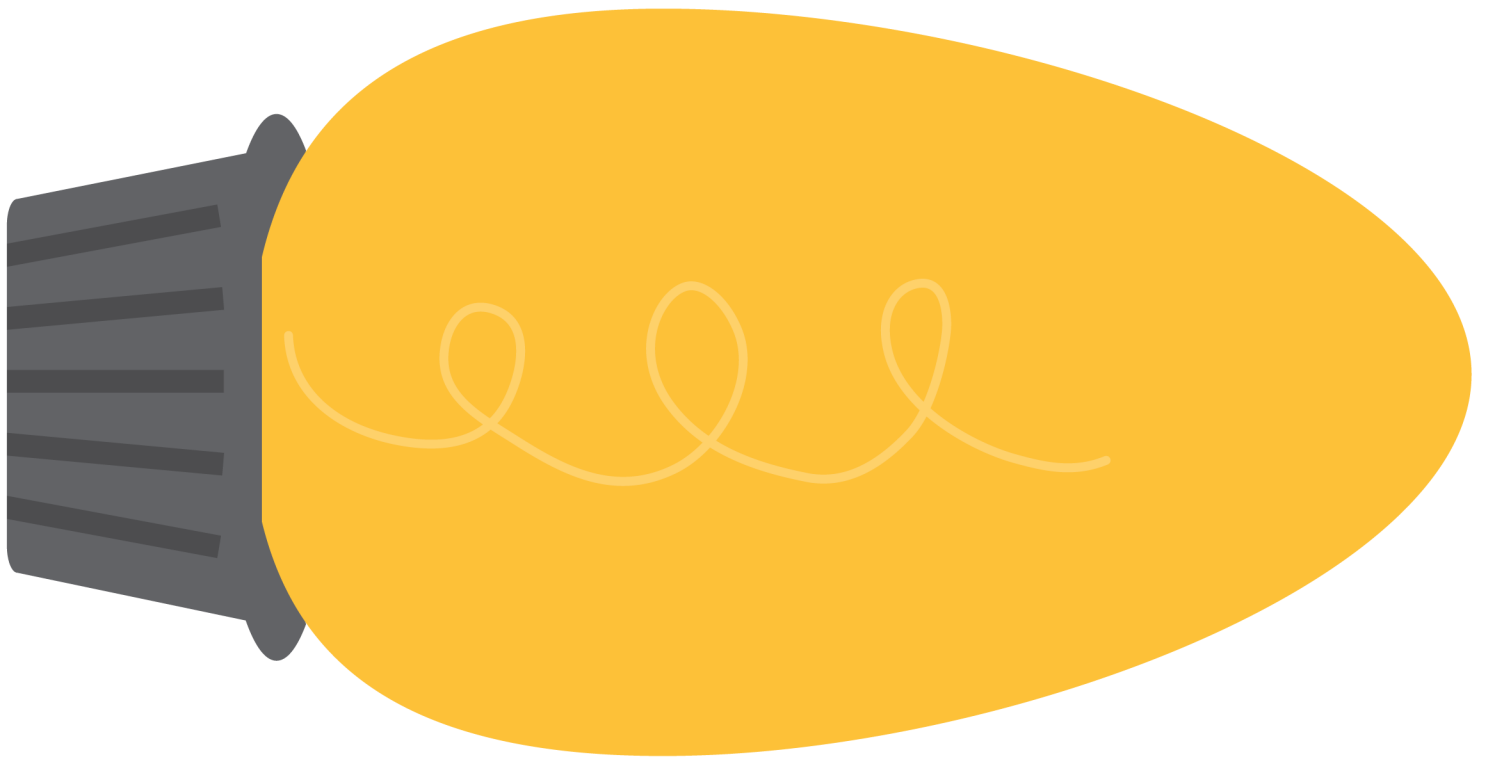
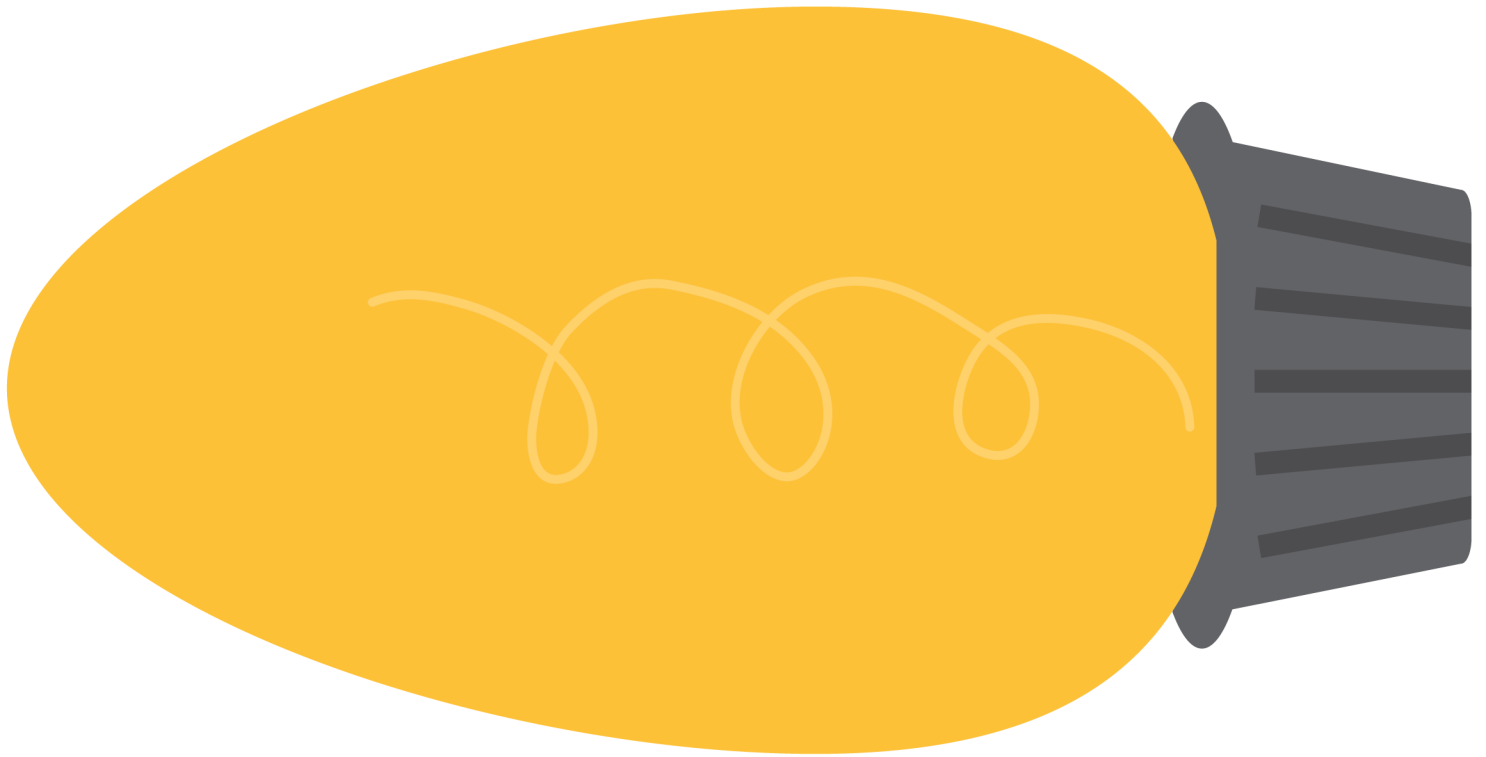
JUMBO CHRISTMAS LIGHT GARLAND

INSTRUCTIONS: Print this template on cardstock and cut out each bulb. Attach bulbs to bulky gray yarn using hot glue to create a garland your desired length.



JUMBO CHRISTMAS LIGHT GARLAND

INSTRUCTIONS: Print this template on cardstock and cut out each bulb. Attach bulbs to bulky gray yarn using hot glue to create a garland your desired length.



JUMBO CHRISTMAS LIGHT GARLAND

INSTRUCTIONS: Print this template on cardstock and cut out each bulb. Attach bulbs to bulky gray yarn using hot glue to create a garland your desired length.

